

Inlet pipe 2"

Ladder

Drain pipe 3"

STEEL ANGLE 2.5"

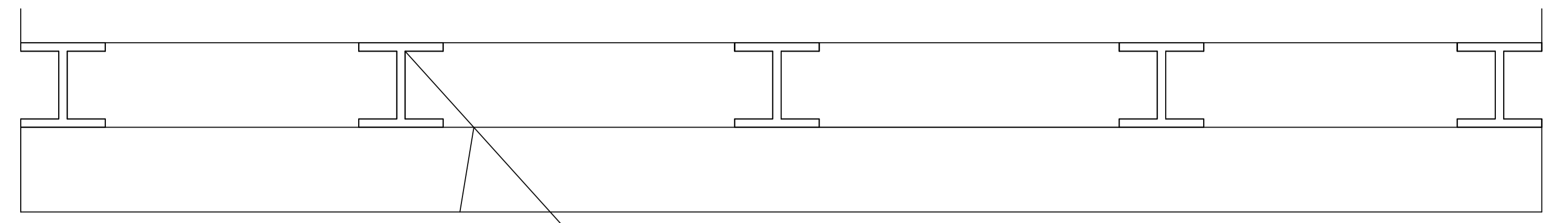
STEEL ANGLE 3"

Steel I-beam
20x10cmx10cm

Outlet pipe 3"

G.L.

ELEVATION



Steel I-beam 20x10cmx10cm

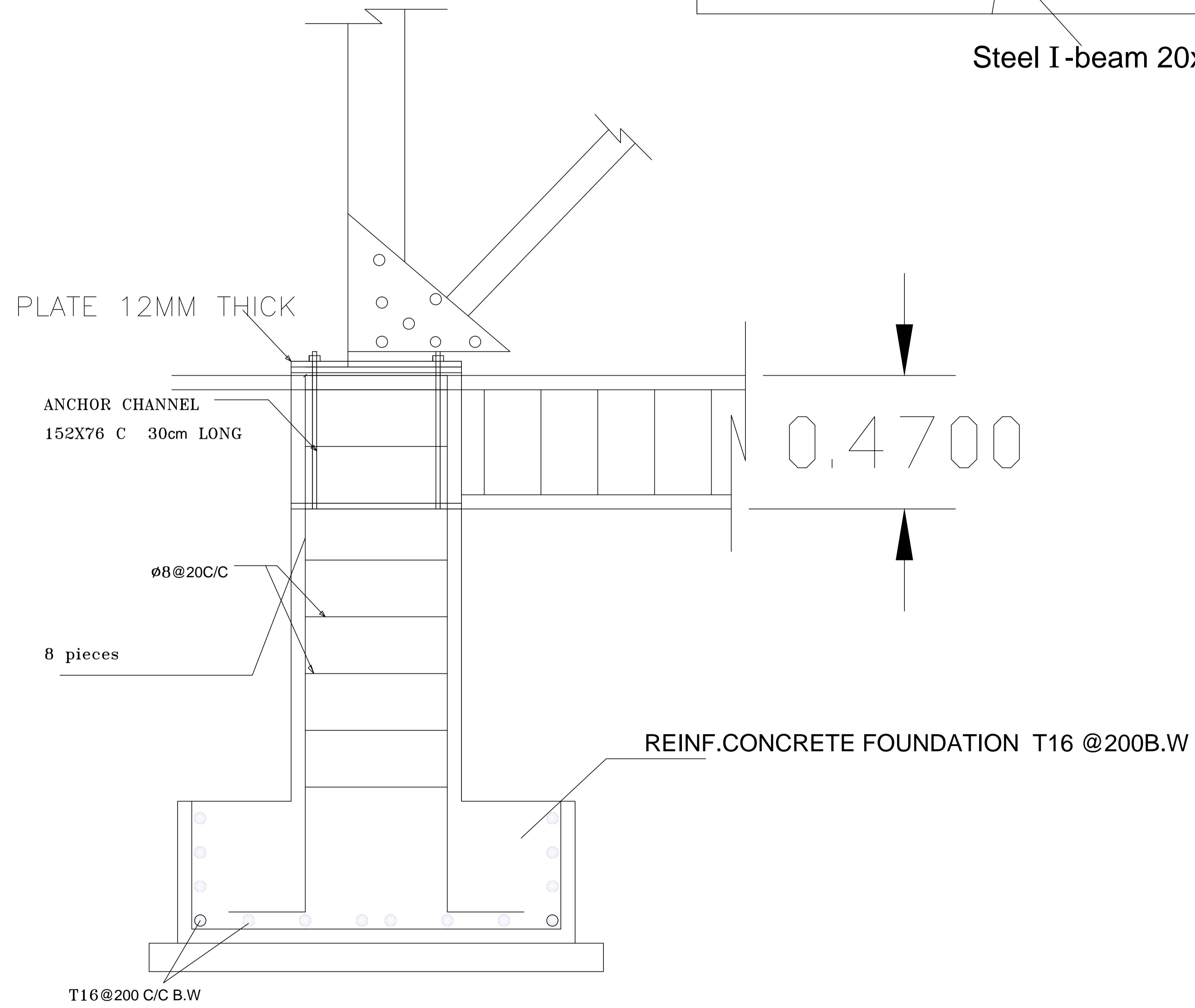


PLATE 12MM THICK

ANCHOR CHANNEL
152X76 C 30cm LONG

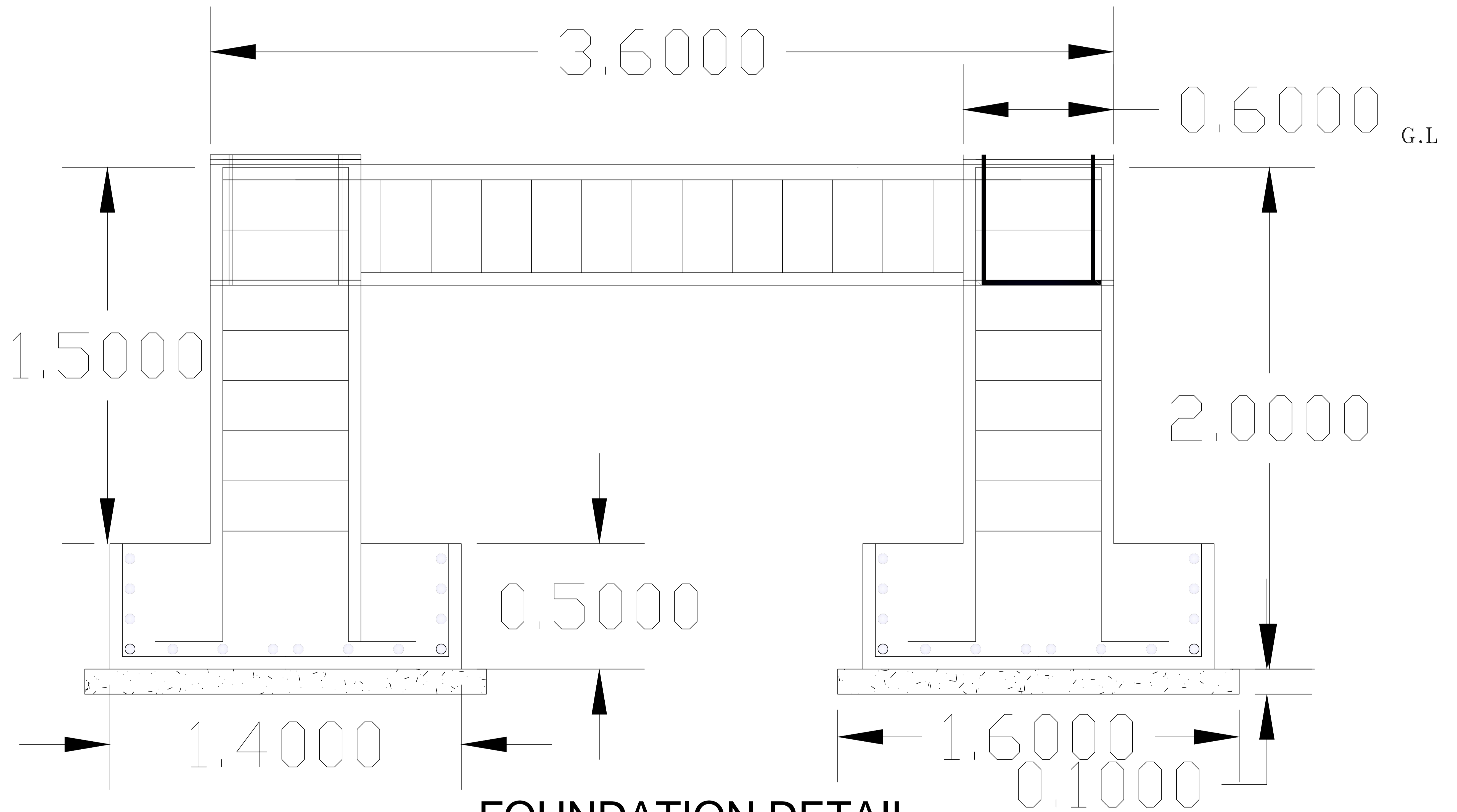
ø8@20C/C

8 pieces

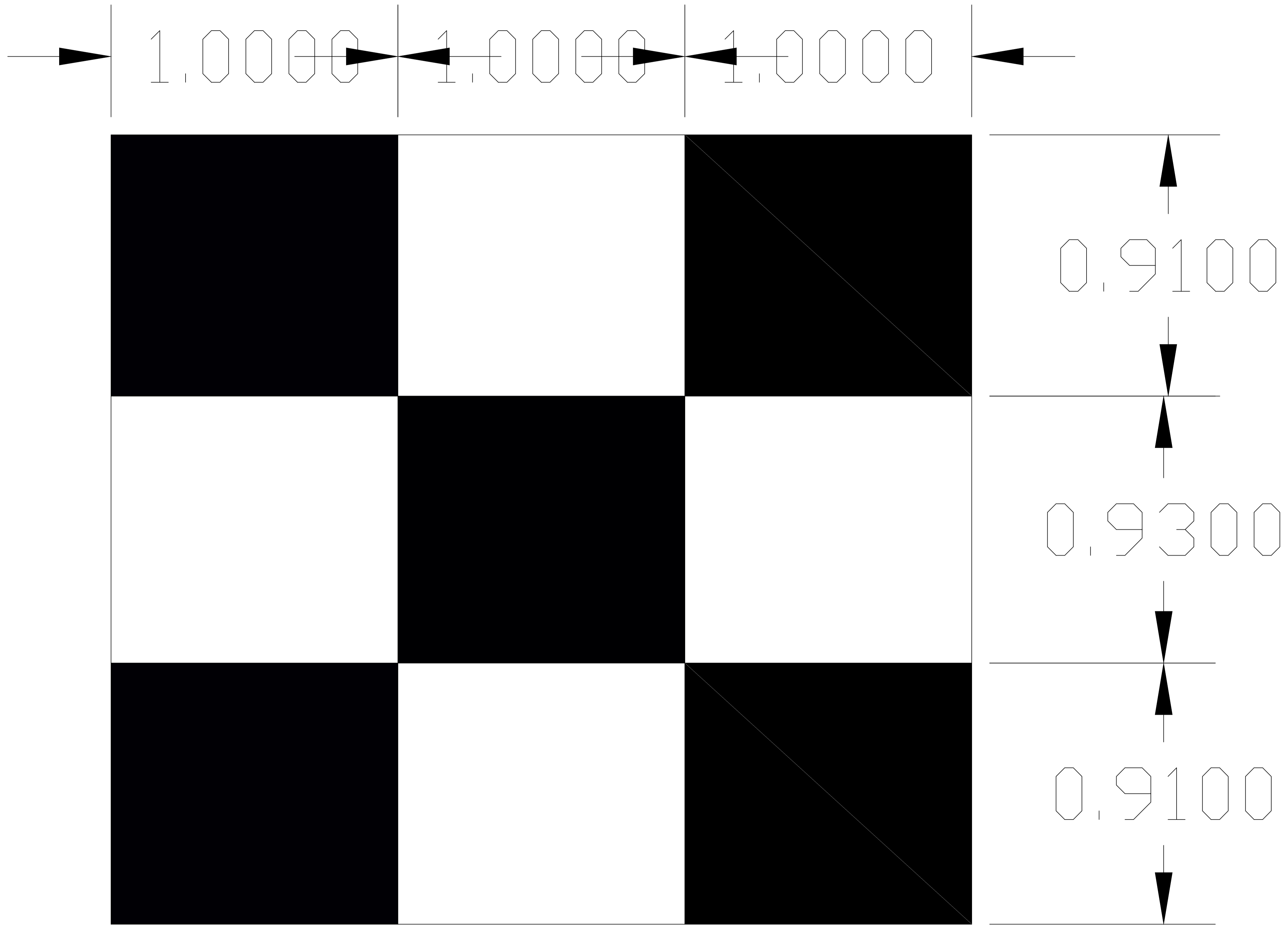
REINF.CONCRETE FOUNDATION T16 @200B.W

T16@200 C/C B.W

0,4700



FOUNDATION DETAIL



ELEVATED WATER TANK CAPACITY 25 M3 TOWER 6 M